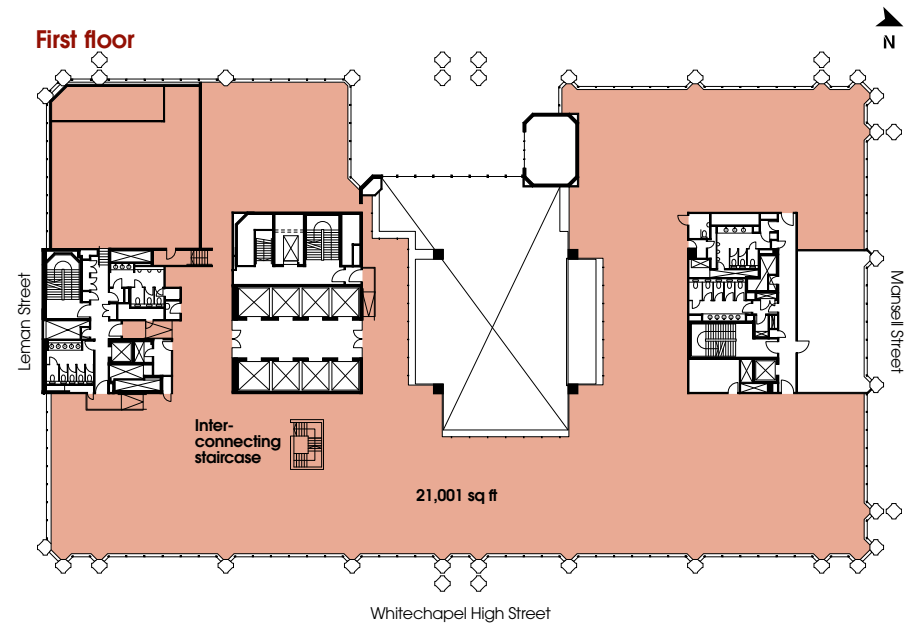
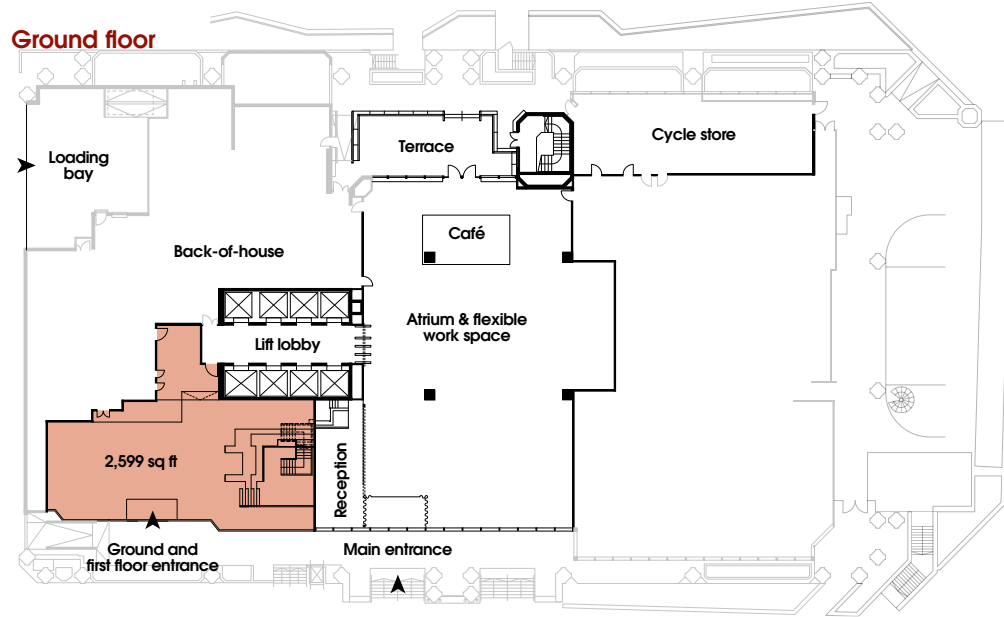


Ground & first floor

This is a seldom-found chance to rent a self-contained duplex office with the attractive perk of a private street-level entrance.

Schedule of Areas

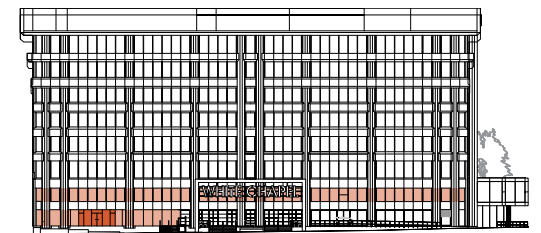
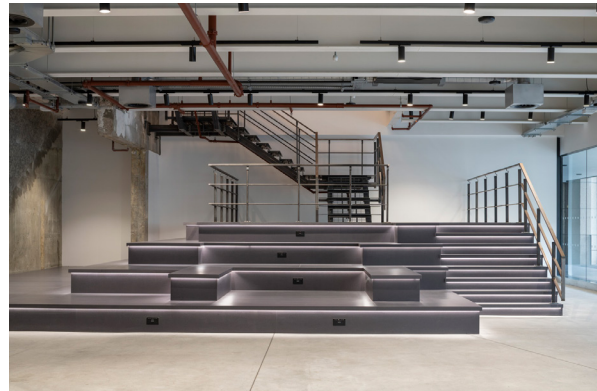
| | sq ft | sq m |
|--------------|---------------|--------------|
| First floor | 21,001 | 1,951 |
| Ground floor | 2,599 | 242 |
| Total | 23,600 | 2,193 |



Ground floor arrival space



Ground and first floors feature an inter-connecting staircase



Ground & first floor

Floorplate along Whitechapel High Street



Third floor

Partially fitted floor, with flexible options to suit your needs

- 90 desks
- 10 meeting rooms, 1 with retractable partition to create an additional room
- Kitchen and lunch space
- 4 quiet pods
- Reception
- Breakout spaces



The unit is situated around the central atrium

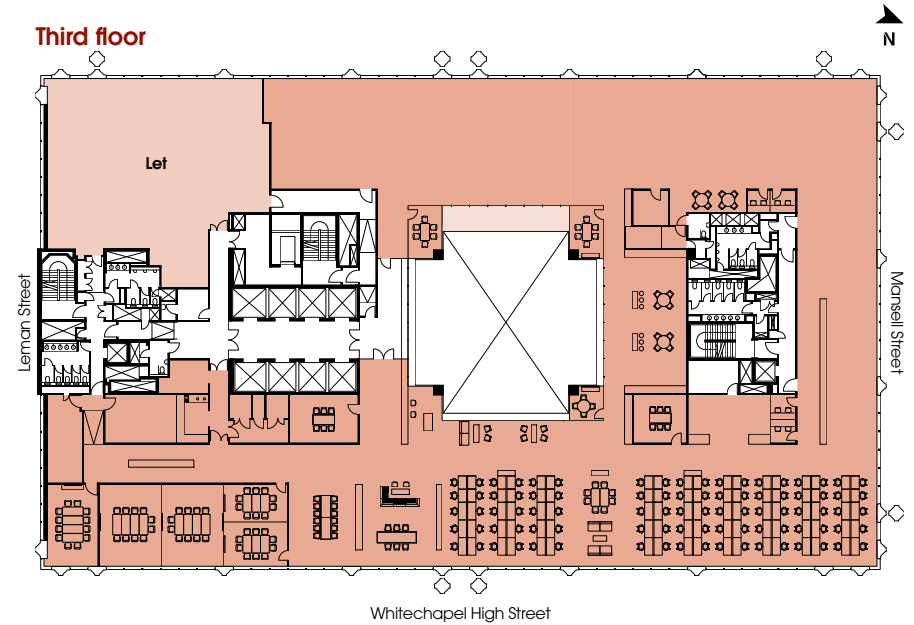
Reception space, breakout areas and desking along Whitechapel High Street



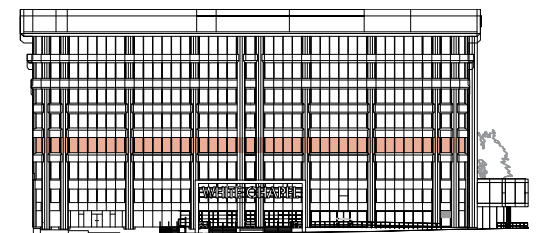
Schedule of Areas

| | sq ft | sq m |
|--------------|---------------|--------------|
| Third floor | 22,850 | 2,123 |
| Total | 22,850 | 2,123 |

Third floor



Whitechapel High Street



Third floor

Floorplate along Whitechapel High Street



Sixth floor

The sixth floor can be taken as a single unit, or split into two smaller units from 4,578 sq ft.

Schedule of Areas

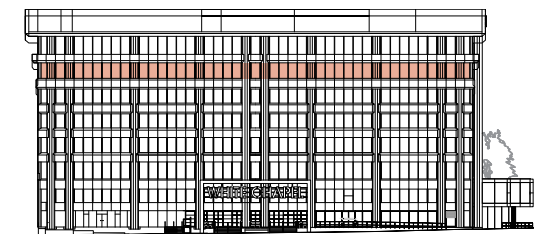
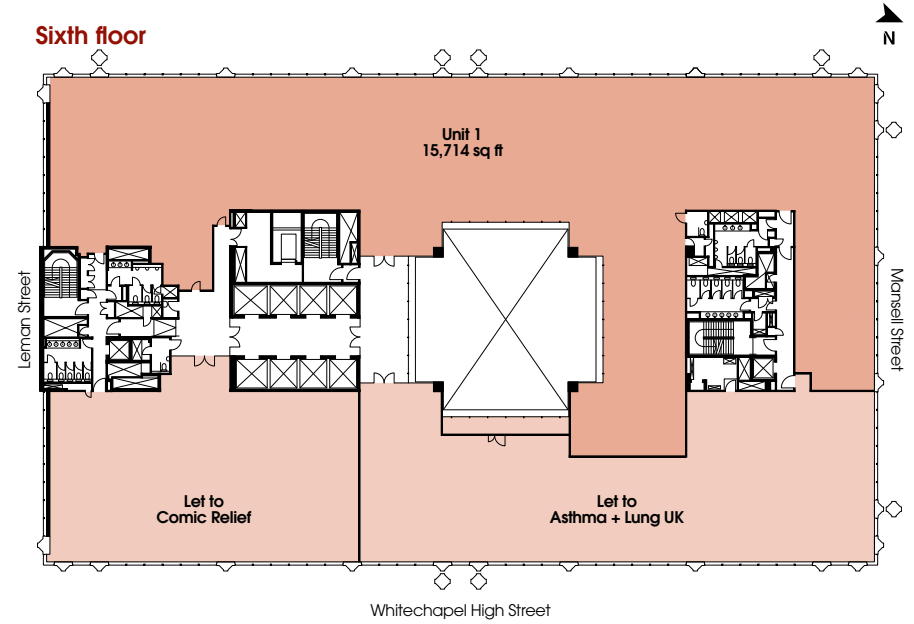
| | sq ft* | sq m* |
|--------------|---------------|--------------|
| Sixth floor | 15,714 | 1,460 |
| Total | 15,714 | 1,460 |

Remaining CAT A space available on the sixth floor



Sixth floor lobby

Sixth floor



*Subject to final measurement on practical completion

Sixth floor

Floorplate along Braham Street

