

Third floor

Partially fitted floor, with flexible options to suit your needs

- 90 desks
- 10 meeting rooms, 1 with retractable partition to create an additional room
- Kitchen and lunch space
- 4 quiet pods
- Reception
- Breakout spaces



The unit is situated around the central atrium

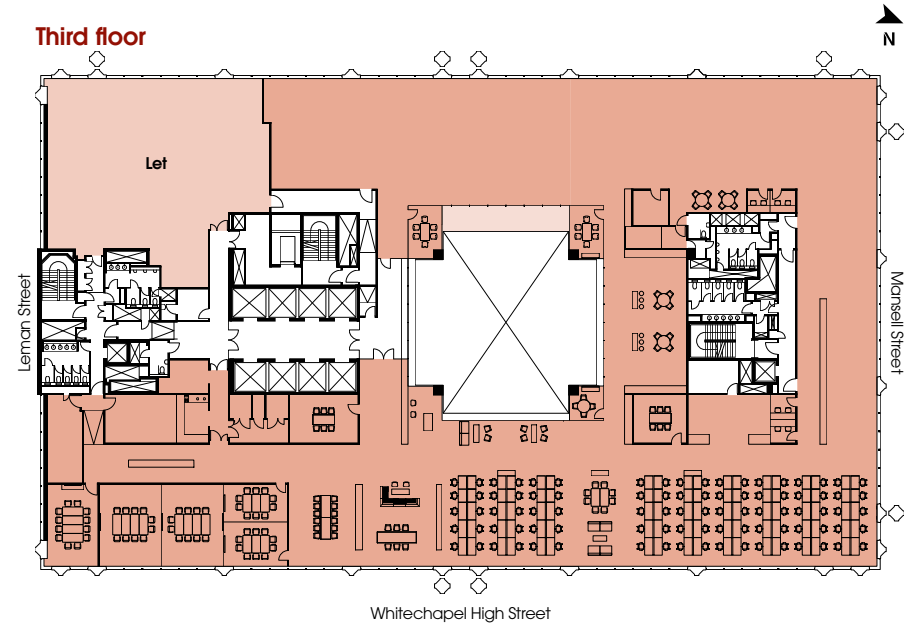
Reception space, breakout areas and desking along Whitechapel High Street



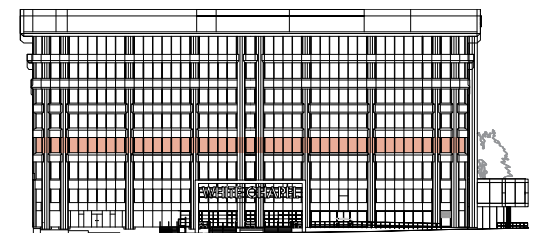
Schedule of Areas

	sq ft	sq m
Third floor	22,850	2,123
Total	22,850	2,123

Third floor



Whitechapel High Street



Third floor

Floorplate along Whitechapel High Street

